

DESTROYER DOME BATTLE STRATEGY

Several factors affect the performance of your top inside the Dome. As you plan your battle strategy, decide which movement pattern, angle of launch and rip speed work best for your top. Experiment and discover your winning combination.

Angle: The angle that the top lands in the Dome changes how your top moves.

- If the top lands on its tip, it will stay at the bottom.
- If the top lands on its side, it will climb up the sides of the Dome.

Aim: Movement pattern is affected by where the top lands in the Dome.

- If the top begins by spinning at the bottom then it can spin up the sides.
- If the top lands on a side wall, it can start spinning at the widest part of the Dome.

Speed:

How fast you make your top spin at launch can help give it the strength and power to defeat your opponent.

Pull everything together:

Customized top, optimal aim and angle, maximum rip speed — now challenge your opponent to a “best out of three” battle.

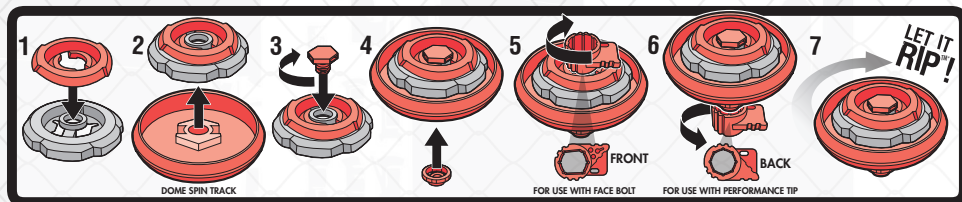
BATTLE
BeybladeBattles.com
ONLINE

*WEBSITE AVAILABLE
FOR A LIMITED TIME ONLY.

TOP ASSEMBLY

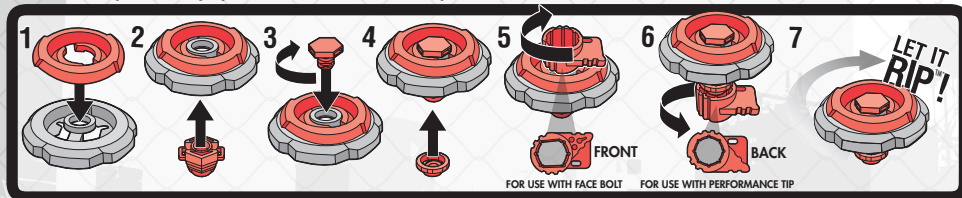
Prepare your top with the Dome Spin Track:

Note: Dome Spin Tracks will fit on all 5-piece Battle Tops.



To assemble your top without the Dome Spin Track:

Note: The tops will only spin in the Dome with the Spin Tracks™* attached.



Questions? Call 1-800-255-5516 Instructions are also online at: www.hasbro.com/customer-service

Dome Spin Tracks work with all 5-piece Beyblade Battle Tops. Launching systems only work with right-spin Metal Fusion/Metal Masters/Metal Fury Battle Tops and XTS Stealth/Electro/Tornado Battlers.

AGES 8+

37087



PERFORMANCE TOP SYSTEM™*

BEYBLADE DESTROYER DOME™*

Instructions

INCLUDES →

Unassembled Dome, 2 five-piece tops,
2 Dome Spin Tracks™*, 2 Ripcord Launchers™*,
2 assembly tools, 2 collector cards
and instructions.



⚠ WARNING:

Do not use Beyblade™ tops or Beystadium™ (sold separately) on tables or other elevated surfaces.

Assembly required. No tools needed.
Use the special Dome Spin Tracks to customize tops for Beyblade Destroyer Dome battles.

Only use Beyblade tops with a Beystadium™ (sold separately) or Destroyer Dome™*.



Product and colors may vary. Retain this package for future reference.
© Takafumi Adachi, MFBBProject, TV Tokyo
Manufactured under license from TOMY Company, Ltd.
® and/or TM* & © 2012 Hasbro. All Rights Reserved.
TM & © denote U.S. Trademarks.

PN: 7277200000



d-rights

APPLY DESTROYER DOME DECALS

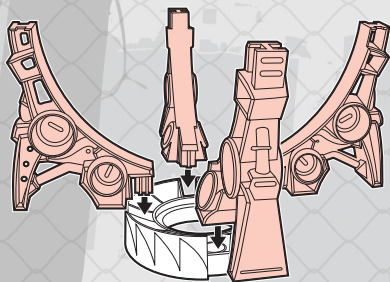


Side 1

Side 2

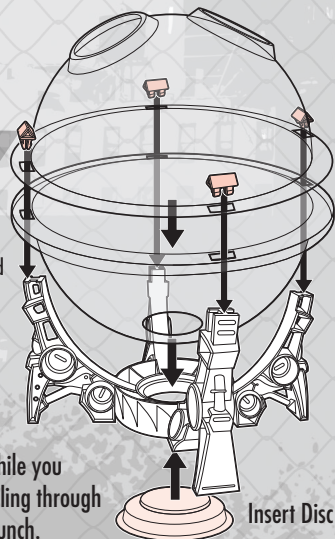
ASSEMBLE DESTROYER DOME

3. Attach Legs



Insert in all 4 clips until you hear a snapping sound to secure to the base of Dome.

4. Secure Dome



5. Insert Disc

Insert the plastic Disc in the hole at the bottom of the Destroyer Dome while you practice your launching technique. The Disc will prevent the tops from falling through the hole after launch. Remove the Disc when you have perfected your launch.

PREPARE THE DOME FOR BATTLE:

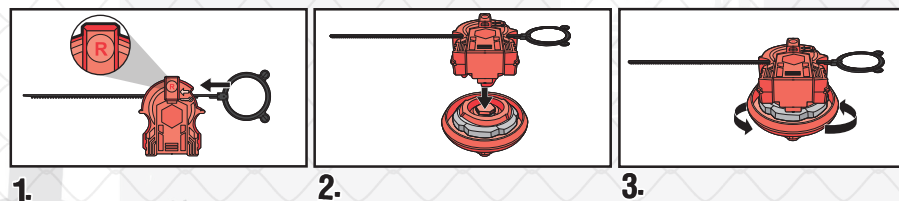
The movement of the tops in the Destroyer Dome naturally causes the dome to shift position. Tops will perform better when the Destroyer Dome is on a stable non-elevated surface that helps prevent it from moving (carpet).

DESTROYER DOME BATTLES

To win a battle, you have to knock your opponent's top into the hole. (If the Disc is inserted, the winner is the last top spinning.)

HOW TO LAUNCH

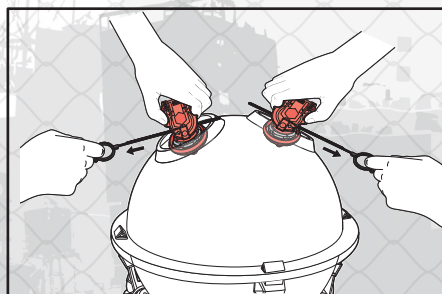
Launch the top into the Dome at varying angles to see what launch angle gives you a battle advantage. Where and how your top lands in the Dome affects how it performs in battle. Practice aiming your top at different areas of the Dome and at different angles to increase your battle success.



1.

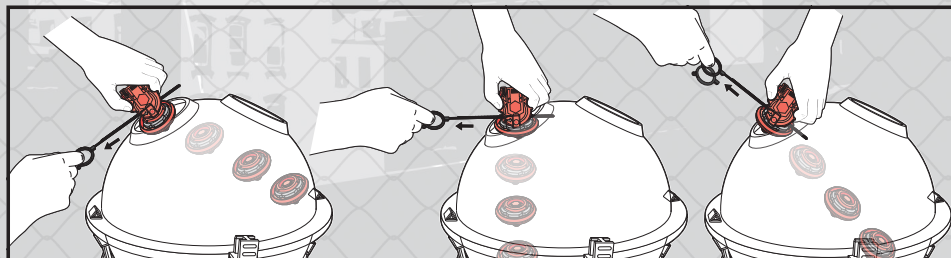
2.

3.



4.

Try launching at different angles!



Keep practicing to improve your battle skills!